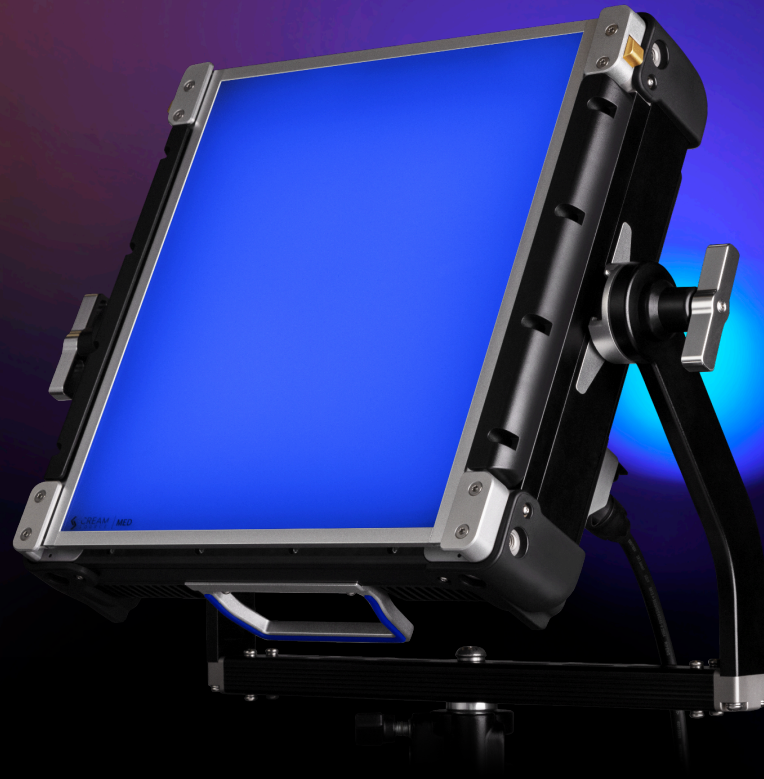


VORTEX 4S



Soft As.

325W
Power

IP65
Water Resistant

LNX
Compatible

PSU
Inside

VORTEX4S OVERVIEW

Discover the Vortex4 Soft (V4S), the 1x1 LED lighting system for professionals seeking versatility and quality. As the softer sibling to the Vortex4 hard panel, it's designed with the same build-quality and user-friendly interface, integrating an RRGBBW colour engine, power supply, and antennas into a sleek, robust design. A 110° beam produces 29,100lumens and 1,180lux @ 3m (5600K, Open Face). This fixture has a CCT range from 2200k to 15000k and four independently controllable zones.

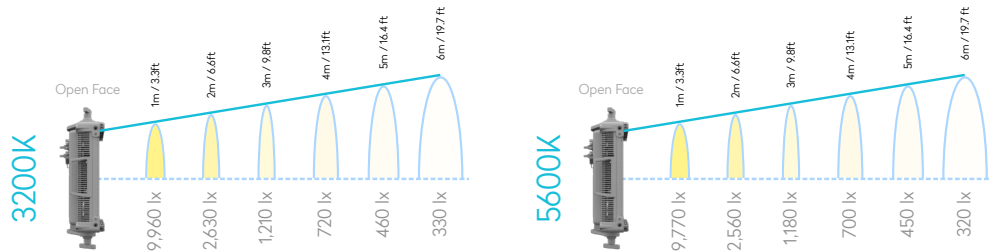
The Vortex4S is a dedicated soft source that blends efficiency and performance with its 325W output, enveloping your space in beautiful full-spectrum soft light. Whether it's for a space-constrained studio setup or the demanding conditions of outdoor broadcasts, the Vortex4 Soft is your go-to lighting solution. Its 48V DC input ensures easy transition to battery power when the action moves off-grid.

Built to endure the rigours of any shooting environment, the Vortex4 Soft is resilient with an IP65 rating that assures dependability even when weather conditions are far from ideal. Powered by CreamOS, it integrates smoothly with other Vortex products, allowing for consistent control and effortless incorporation into existing setups.

With a 5-year warranty upon registration, the Vortex4S is committed to reliability. Learn more at www.creamsource.com.



VORTEX4S PHOTOMETRICS



3200K		1m	2m	3m	4m	5m	6m	10m								
		Open Face	9960	2630	1210	720	460	330	140	3.3ft	6.6ft	9.8ft	13.1ft	16.4ft	19.7ft	32.8ft
	Intensifier	10100	2705	1250	730	480	345	140	938	251	116	68	45	32	13	FC
	Diffuser	7800	2040	940	550	365	260	110	725	190	87	51	34	24	10	FC
	Dome	6800	1765	815	475	315	225	90	632	164	76	44	29	21	8	FC

5600K		1m	2m	3m	4m	5m	6m	10m								
		Open Face	9770	2560	1180	700	450	320	140	3.3ft	6.6ft	9.8ft	13.1ft	16.4ft	19.7ft	32.8ft
	Intensifier	9900	2635	1220	710	470	335	135	920	245	113	66	44	31	13	FC
	Diffuser	7700	1990	915	535	355	255	105	715	185	85	50	33	24	10	FC
	Dome	6700	1720	795	465	305	220	90	622	160	74	43	28	20	8	FC

VORTEX4S SPECS

Power	325W		
Light Zones (Pixels)	4		
Material	Aluminium/Technopolymer		
Light Source	RRGBBW LED		
Colour Range	CCT: 2200 - 15000K, PLUS/MINUS GREEN, HUE/SATURATION, XY, GELS, DIRECT RGBW, EFFECTS		
CRI / TLCI	Typical 95		
Beam Angle	110° (Half Peak Angle)		
Tilt Angle	360°		
Photometrics	<table border="0"> <tr> <td>Open Face 3200K: 9,960 lx / 925 fc @ 1m / 3.3ft 2,630 lx / 244 fc @ 2m / 6.6ft 1,210 lx / 112 fc @ 3m / 9.8ft 720 lx / 67 fc @ 4m / 13.1ft 460 lx / 43 fc @ 5m / 16.4 ft 330 lx / 31 fc @ 6m / 19.7 ft</td> <td>Open Face 5600K: 9,770 lx / 908 fc @ 1m / 3.3ft 2,560 lx / 238 fc @ 2m / 6.6ft 1,180 lx / 110 fc @ 3m / 9.8ft 700 lx / 65 fc @ 4m / 13.1ft 450 lx / 42 fc @ 5m / 16.4 ft 320 lx / 30 fc @ 6m / 19.7 ft</td> </tr> </table>	Open Face 3200K: 9,960 lx / 925 fc @ 1m / 3.3ft 2,630 lx / 244 fc @ 2m / 6.6ft 1,210 lx / 112 fc @ 3m / 9.8ft 720 lx / 67 fc @ 4m / 13.1ft 460 lx / 43 fc @ 5m / 16.4 ft 330 lx / 31 fc @ 6m / 19.7 ft	Open Face 5600K: 9,770 lx / 908 fc @ 1m / 3.3ft 2,560 lx / 238 fc @ 2m / 6.6ft 1,180 lx / 110 fc @ 3m / 9.8ft 700 lx / 65 fc @ 4m / 13.1ft 450 lx / 42 fc @ 5m / 16.4 ft 320 lx / 30 fc @ 6m / 19.7 ft
Open Face 3200K: 9,960 lx / 925 fc @ 1m / 3.3ft 2,630 lx / 244 fc @ 2m / 6.6ft 1,210 lx / 112 fc @ 3m / 9.8ft 720 lx / 67 fc @ 4m / 13.1ft 460 lx / 43 fc @ 5m / 16.4 ft 330 lx / 31 fc @ 6m / 19.7 ft	Open Face 5600K: 9,770 lx / 908 fc @ 1m / 3.3ft 2,560 lx / 238 fc @ 2m / 6.6ft 1,180 lx / 110 fc @ 3m / 9.8ft 700 lx / 65 fc @ 4m / 13.1ft 450 lx / 42 fc @ 5m / 16.4 ft 320 lx / 30 fc @ 6m / 19.7 ft		
Mounting	8x3/8" threaded rigging points, 4x LNX sockets		
Yoke	Removable quick release yoke		
Filter Rails	2 Filter Rails for Secondary Lenses, Diffusers, Accessories		
User interface	High Precision Digital Magnetic Encoder, Backlit Keypad, Colour LCD Display		
Dimming	0-100% with High Resolution, Super-Smooth Low End Mode		
High Speed Capability	Over 5000fps Flicker Free in High Speed Mode		
Synchronization	Sync Input for Triggering and Syncing to Camera Shutter		
Max Ambient Temperature	40°C / 104°F		
Cooling	Low noise variable speed fans		
Estimated LED Lifespan	50,000hrs (L70)		
Input (AC)	100-240V AC, 50/60Hz, Max 3.3A. Neutrik powerCON TRUE1 connector		
Input (DC)	48V DC, Max 6.9A, Can run at 100% brightness on DC input		
Protection Class	IP65		
Weight	8.9kg / 19.6lb (Excluding yoke) 10.7kg / 23.6lb (Including yoke)		
Dimensions	380 x 380 x 121 mm / 15 x 15 x 4.8 in. (Excluding Yoke) 525 x 570 x 179.25 mm / 20.7 x 22.4 x 7.1 in. (Including Yoke)		
Warranty	3 years on fixtures (5 years if registered) 12 months on accessories		
Certifications	Pending: CE, UKCA, RCM, CSA, ETL, FCC		
Control	On-Board Interface, DMX via standard 5-pin XLR connectors, Wired Remote Control Accessory, Integrated LumenRadio TimoTwo with BLE, etherCON, USB Type A		
Includes	Vortex4S, Yoke, Power Cable, Flat Diffuser		
Product Code	K-CSV-4S-ESS (Essentials Kit)		